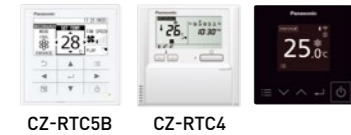


DELUXE / STANDARD ADAPTIVE DUCTED

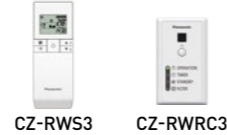
- Air intake from rear as standard. Industry-leading horizontal and vertical design.
- Powerful 150Pa ESP and space saving 250 mm height, filter included.
- Built-in Drain pump and selectable air inlet position (bottom and rear).

[Selectable Remote Controller]



CZ-RTC6
CZ-RTC6BL [BLE]
CZ-RTC6BLW [BLE&WLAN]

[Optional Wireless Remote Controller]



[Optional Adaptor]



If not use CZ-RTC6BLW, the adaptor also can be used.



DELUXE

Specifications of R32 DELUXE Series R32

| Capacity [Btu/h] | V/Phase Hz | 17,100 | 20,500 | 24,200 | 34,100 | 42,700 | 42,700(3) | 47,800 | 47,800(3) | |
|------------------------------------|-----------------|---------------------------|-----------------------|-----------------------|------------------------|------------------------|------------------------|------------------------|------------------------|--|
| | | 220-240V, 10 Phase - 50Hz | | | | | | | | |
| Power Source | | 380-415V, 30 Phase - 50Hz | | | | | | | | |
| Indoor Unit | | S-1821PF3H | S-1821PF3H | S-2430PF3H | S-3448PF3H | S-3448PF3H | S-3448PF3H | S-3448PF3H | S-3448PF3H | |
| Outdoor Unit | | U-18PRH1H5 | U-21PRH1H5 | U-24PRH1H5 | U-34PRH1H5 | U-43PRH1H5 | U-43PRH1H5 | U-48PRH1H5 | U-48PRH1H5 | |
| Cooling Capacity : Rated (Min-Max) | kW | 5.00 [1.60-6.00] | 6.00 [1.60-6.30] | 7.10 [1.80-8.00] | 10.00 [3.80-11.20] | 12.50 [3.80-14.00] | 12.50 [3.80-14.00] | 14.00 [5.30-15.50] | 14.00 [5.30-15.50] | |
| | Btu/h | 17,100 [5,460-20,500] | 20,500 [5,460-21,500] | 24,200 [6,140-27,300] | 34,100 [13,000-38,200] | 42,700 [13,000-47,800] | 42,700 [13,000-47,800] | 47,800 [18,100-52,900] | 47,800 [18,100-52,900] | |
| Current: Rated (Max) | A | 5.6-5.3 [9.1] | 7.4-6.9 [11.0] | 8.3-7.7 [12.0] | 11.9-10.9 [25.5] | 17.7-16.3 [26.0] | 17.7-16.3 [26.0] | 21.4-19.7 [28.0] | 7.1-6.5 [11.5] | |
| Power Input: Rated (Min-Max) | kW | 1.16 [0.24-1.55] | 1.58 [0.24-1.80] | 1.80 [0.30-2.35] | 2.40 [0.65-3.08] | 3.59 [0.65-4.35] | 3.59 [0.65-4.35] | 4.34 [0.96-5.15] | 4.34 [0.96-5.15] | |
| CSPF | | 5.90 | 5.60 | 6.10 | 6.40 | 5.45 | 5.45 | 5.55 | 5.55 | |
| COP/EER | W/W | 4.31 | 3.8 | 4.17 | 3.48 | 3.48 | 3.48 | 3.23 | 3.23 | |
| | Btu/hW | 14.74 | 12.97 | 13.44 | 14.51 | 11.89 | 11.89 | 11.01 | 11.01 | |
| Indoor Unit | | | | | | | | | | |
| Air Volume | m³/min | 16.0 | 16.0 | 21.0 | 36.0 | 36.0 | 36.0 | 36.0 | 36.0 | |
| | cfm | 565 | 565 | 740 | 1,270 | 1,270 | 1,270 | 1,270 | 1,270 | |
| External static pressure | Pa | 30 [10-150] | 30 [10-150] | 30 [10-150] | 50 [10-150] | 50 [10-150] | 50 [10-150] | 50 [10-150] | 50 [10-150] | |
| Sound Pressure Level (Hi/Lo) | dB [A] | 35 / 29 | 35 / 29 | 35 / 29 | 40 / 30 | 40 / 30 | 40 / 30 | 40 / 30 | 40 / 30 | |
| Sound Power Level (Hi/Lo) | dB | 58 / 52 | 58 / 52 | 58 / 52 | 63 / 53 | 63 / 53 | 63 / 53 | 63 / 53 | 63 / 53 | |
| Dimension | Indoor (HxWxD) | mm | 250 x 800 x 730 | 250 x 800 x 730 | 250 x 1,000 x 730 | 250 x 1,400 x 730 | 250 x 1,400 x 730 | 250 x 1,400 x 730 | 250 x 1,400 x 730 | |
| Net Weight | Indoor | kg | 25 | 25 | 30 | 39 | 39 | 39 | 39 | |
| Outdoor Unit | | | | | | | | | | |
| Sound Pressure Level | dB [A] | 50 | 51 | 53 | 54 | 57 | 57 | 58 | 58 | |
| Sound Power Level | dB | 69 | 70 | 72 | 73 | 76 | 76 | 77 | 77 | |
| Dimension | Outdoor (HxWxD) | mm | 695 x 875 x 320 | 695 x 875 x 320 | 695 x 875 x 320 | 996 x 980 x 370 | 996 x 980 x 370 | 996 x 980 x 370 | 996 x 980 x 370 | |
| Net Weight | | kg | 39 | 39 | 69 | 69 | 67 | 75 | 73 | |
| Piping Connection | Gas Pipe | mm (inch) | 12.70 (1/2) | 12.70 (1/2) | 15.88 (5/8) | 15.88 (5/8) | 15.88 (5/8) | 15.88 (5/8) | 15.88 (5/8) | |
| | Liquid Pipe | mm (inch) | 6.35 (1/4) | 6.35 (1/4) | 9.52 (3/8) | 9.52 (3/8) | 9.52 (3/8) | 9.52 (3/8) | 9.52 (3/8) | |
| Pipe Length | Min-Max | m | 5 - 50 | 5 - 50 | 5 - 50 | 5 - 50 | 5 - 50 | 5 - 50 | 5 - 50 | |
| Elevation Difference | m | 30 | 30 | 30 | 30 | 30 | 30 | 30 | 30 | |
| Maximum Chargeless Length | Max | m | 30 | 30 | 30 | 30 | 30 | 30 | 30 | |
| Additional Gas | g/m | 15 | 15 | 25 | 25 | 25 | 25 | 25 | 25 | |
| Operation Range, Outdoor | Min-Max | °C | 16-52 | 16-52 | 16-52 | 16-52 | 16-52 | 16-52 | 16-52 | |

* Specifications are subject to change without notice. Please refer to technical documents for more details. * The sound pressure level is measured in accordance with JIS C 9612 and JIS B 8616. * DELUXE series indoor units can only be connected to outdoor units of the same series. * CZ-CAPWFC1 is a WLAN smart adaptor for connecting to the Comfort Cloud app.

STANDARD

Specifications of R32 STANDARD Series R32

| Capacity [Btu/h] | V/Phase Hz | 17,100 | 20,500 | 24,200 | 27,600 | 34,100 | 42,700 | 42,700 (3) | 47,000 | 47,000 (3) | 47,000 | 47,000 (3) | 47,000 (3) |
|------------------------------------|-----------------|---------------------------|-----------------------|-----------------------|-----------------------|------------------------|------------------------|------------------------|------------------------|------------------------|------------------------|------------------------|------------------------|
| | | 220-240V, 10 Phase - 50Hz | | | | | | | | | | | |
| Power Source | | 380-415V, 30 Phase - 50Hz | | | | | | | | | | | |
| Indoor Unit | | S-1821PF3H | S-1821PF3H | S-2430PF3H | S-2430PF3H | S-3448PF3H | S-3448PF3H | S-3448PF3H | S-3448PF3H | S-3448PF3H | S-3448PF3H | S-3448PF3H | S-3448PF3H |
| Outdoor Unit | | U-18PR1H5 | U-21PR1H5 | U-24PR1H5 | U-30PR1H5 | U-34PR1H5 | U-43PR1H5 | U-43PR1H5 | U-48PR1H5 | U-48PR1H5 | U-48PR1H5 | U-48PR1H5 | U-48PR1H5 |
| Cooling Capacity : Rated (Min-Max) | kW | 5.00 [2.00-5.60] | 6.00 [2.00-6.30] | 7.10 [2.00-7.60] | 8.10 [2.00-8.90] | 10.00 [3.20-11.20] | 12.50 [3.80-13.50] | 12.50 [3.80-13.50] | 13.77 [3.80-14.20] | 13.77 [3.80-14.20] | 13.77 [3.80-14.20] | 13.77 [3.80-14.20] | 13.77 [3.80-14.20] |
| | Btu/h | 17,100 [6,820-19,100] | 20,500 [6,820-21,500] | 24,200 [6,820-25,900] | 27,600 [6,820-30,400] | 34,100 [10,900-38,200] | 42,700 [13,000-46,100] | 42,700 [13,000-46,100] | 47,000 [13,000-48,500] | 47,000 [13,000-48,500] | 47,000 [13,000-48,500] | 47,000 [13,000-48,500] | 47,000 [13,000-48,500] |
| Current: Rated (Max) | A | 7.2-6.8 [9.1] | 9.1-8.6 [11.0] | 10.5-9.7 [12.0] | 12.1-11.1 [15.5] | 14.5-13.3 [16.5] | 19.6-17.9 [26.0] | 6.5-5.9 [10.5] | 23.6-21.6 [28.0] | 7.8-7.1 [11.0] | 7.8-7.1 [11.0] | 7.8-7.1 [11.0] | 7.8-7.1 [11.0] |
| Power Input: Rated (Min-Max) | kW | 1.54 [0.41-1.75] | 1.95 [0.41-2.30] | 2.27 [0.34-2.48] | 2.60 [0.33-2.90] | 3.12 [0.59-3.65] | 3.96 [0.65-4.35] | 3.96 [0.65-4.35] | 4.77 [0.65-4.95] | 4.77 [0.65-4.95] | 4.77 [0.65-4.95] | 4.77 [0.65-4.95] | 4.77 [0.65-4.95] |
| CSPF | | 5.02 | 4.65 | 5.21 | 5.21 | 4.74 | 5.02 | 5.02 | 4.74 | 4.74 | 4.74 | 4.74 | 4.74 |
| COP/EER | W/W | 3.25 | 3.08 | 3.13 | 3.12 | 3.21 | 3.16 | 3.16 | 2.89 | 2.89 | 2.89 | 2.89 | 2.89 |
| | Btu/hW | 11.10 | 10.51 | 10.66 | 10.62 | 10.93 | 10.78 | 10.78 | 9.85 | 9.85 | 9.85 | 9.85 | 9.85 |
| Indoor Unit | | | | | | | | | | | | | |
| Air Volume | m³/min | 16.0 | 16.0 | 21.0 | 21.0 | 36.0 | 36.0 | 36.0 | 36.0 | 36.0 | 36.0 | 36.0 | 36.0 |
| | cfm | 565 | 565 | 740 | 740 | 1,270 | 1,270 | 1,270 | 1,270 | 1,270 | 1,270 | 1,270 | 1,270 |
| External static pressure | Pa | 30 [10-150] | 30 [10-150] | 30 [10-150] | 30 [10-150] | 50 [10-150] | 50 [10-150] | 50 [10-150] | 50 [10-150] | 50 [10-150] | 50 [10-150] | 50 [10-150] | 50 [10-150] |
| Sound Pressure Level (Hi/Lo) | dB [A] | 35 / 29 | 35 / 29 | 35 / 29 | 35 / 29 | 40 / 30 | 40 / 30 | 40 / 30 | 40 / 30 | 40 / 30 | 40 / 30 | 40 / 30 | 40 / 30 |
| Sound Power Level (Hi/Lo) | dB | 58 / 52 | 58 / 52 | 58 / 52 | 58 / 52 | 63 / 53 | 63 / 53 | 63 / 53 | 63 / 53 | 63 / 53 | 63 / 53 | 63 / 53 | 63 / 53 |
| Dimension | Indoor (HxWxD) | mm | 250 x 800 x 730 | 250 x 800 x 730 | 250 x 1,000 x 730 | 250 x 1,400 x 730 | 250 x 1,400 x 730 | 250 x 1,400 x 730 | 250 x 1,400 x 730 | 250 x 1,400 x 730 | 250 x 1,400 x 730 | 250 x 1,400 x 730 | 250 x 1,400 x 730 |
| Net Weight | Indoor | kg | 25 | 25 | 30 | 39 | 39 | 39 | 39 | 39 | 39 | 39 | 39 |
| Outdoor Unit | | | | | | | | | | | | | |
| Sound Pressure Level | dB [A] | 50 | 51 | 51 | 53 | 55 | 57 | 57 | 58 | 58 | 58 | 58 | 58 |
| Sound Power Level | dB | 69 | 70 | 70 | 72 | 74 | 76 | 76 | 77 | 77 | 77 | 77 | 77 |
| Dimension | Outdoor (HxWxD) | mm | 619 x 824 x 299 | 619 x 824 x 299 | 619 x 824 x 299 | 695 x 875 x 320 | 695 x 875 x 320 | 996 x 980 x 370 | 996 x 980 x 370 | 996 x 980 x 370 | 996 x 980 x 370 | 996 x 980 x 370 | 996 x 980 x 370 |
| Net Weight | | kg | 29 | 29 | 33 | 39 | 48 | 68 | 67 | 68 | 67 | 67 | 67 |
| Piping Connection | Gas Pipe | mm (inch) | 12.70 (1/2) | 12.70 (1/2) | 15.88 (5/8) | 15.88 (5/8) | 15.88 (5/8) | 15.88 (5/8) | 15.88 (5/8) | 15.88 (5/8) | 15.88 (5/8) | 15.88 (5/8) | 15.88 (5/8) |
| | Liquid Pipe | mm (inch) | 6.35 (1/4) | 6.35 (1/4) | 9.52 (3/8) | 9.52 (3/8) | 9.52 (3/8) | 9.52 (3/8) | 9.52 (3/8) | 9.52 (3/8) | 9.52 (3/8) | 9.52 (3/8) | 9.52 (3/8) |
| Pipe Length | Min-Max | m | 5 - 30 | 5 - 30 | 5 - 30 | 5 - 50 | 5 - 50 | 5 - 50 | 5 - 50 | 5 - 50 | 5 - 50 | 5 - 50 | 5 - 50 |
| Elevation Difference | m | 20 | 20 | 20 | 30 | 30 | 30 | 30 | 30 | 30 | 30 | 30 | 30 |
| Maximum Chargeless Length | Max | m | 10 | 10 | 10 | 30 | 30 | 30 | 30 | 30 | 30 | 30 | 30 |
| Additional Gas | g/m | 15 | 15 | 15 | 25 | 25 | 25 | 25 | 25 | 25 | 25 | 25 | 25 |
| Operation Range, Outdoor | Min-Max | °C | 16-46 | 16-46 | 16-46 | 16-46 | 16-46 | 16-46 | 16-46 | 16-46 | 16-46 | 16-46 | 16-46 |

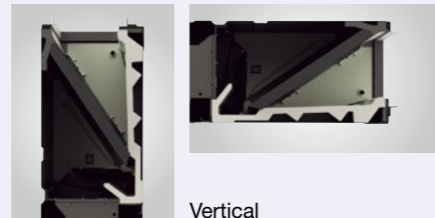
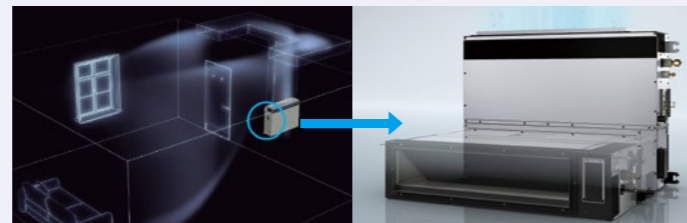
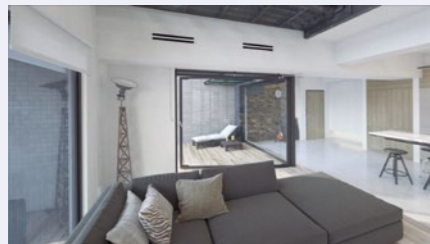
* Specifications are subject to change without notice. Please refer to technical documents for more details. * The sound pressure level is measured in accordance with JIS C 9612 and JIS B 8616. * STANDARD series indoor units can only be connected to outdoor units of the same series. * CZ-CAPWFC1 is a WLAN smart adaptor for connecting to the Comfort Cloud app.

Flexible Installation Adaptive Ducted

New NX Series Adaptive Ducted units can be mounted not only horizontally but also vertically without the need for alterations. Our groundbreaking drain pan design delivers a new level of flexibility in an industry-leading vertical installation.



Product information



Horizontal

Vertical

Compact Body with Powerful 150 Pa ESP

The indoor units have also been completely renewed, offering a 40 mm height reduction to only 250 mm* and a weight reduction of up to 10%, all while maintaining the same powerful 150 Pa.

* Compared to conventional model.

Space saving 250 mm height



Height 290 mm Weight* 31 kg

Height 250 mm Weight* 25 kg

Note: In the case of 5.0kW and 6.0kW.

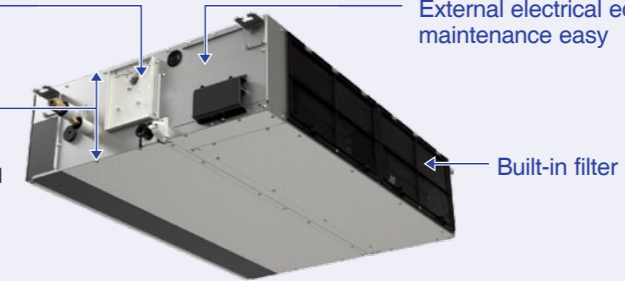
Technical Focus

Built-in Drain pump (DC motor pump)

External electrical equipment box makes maintenance easy

Space saving height of 250mm for all models

250mm standardised height provides easy and uniform installation for models with different capacities, especially when ceiling heights are restricted.



Superior air quality nanoeX

The new ducted models are equipped with nanoe™ X as standard, a unique air quality improvement technology producing twice the amount of hydroxyl radicals compared to previous generations. Combined with the strong static pressure this ensures pristine nanoe™ X air travels unaffected even through multiple duct shapes at lengths of 10m, as well as making them ideal for use in larger spaces.

Note: PF3 and PE3 (16.0kW and below) ranges only.



Bend once Bend twice Bend three times
Based on in-house test result, even with a total ductwork length up to 10m, effectiveness of nanoe™ X is maintained.

Selectable air inlet position

A removable panel allows air inlet position to be adjusted to enable rear or bottom entry, depending on ductwork installation.

