

# M1<sub>TYPE</sub> Slim Low Static Ducted Concealed duct



The ultra slim M1 type is one of the leading products of its type in the industry. With a height of only 200 mm, it provides greater flexibility and adaptability for various applications. In addition, high efficiency and extreme low noise level make it highly suitable for hotels and small offices.



S-22MM1E5A / S-28MM1E5A / S-36MM1E5A  
S-45MM1E5A / S-56MM1E5A

Optional accessory



## Technical focus

- Ultra-slim profile: 200 mm for all models
- DC fan motor greatly reduces power consumption
- Ideal for hotel application with very narrow false ceilings
- Easy maintenance and service by external electrical box
- 40 Pa static pressure enables ductwork to be fitted.
- Includes drain pump
- Includes built in filter

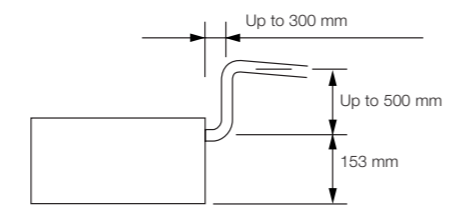
### Ultra-slim profile for all models

200mm height for all models allows installation in very narrow ceilings.



### Drain pump with increased power!

Using the built-in high-lift drain pump, the drain piping rise height can be increased to 653 mm from the lower surface of the body.

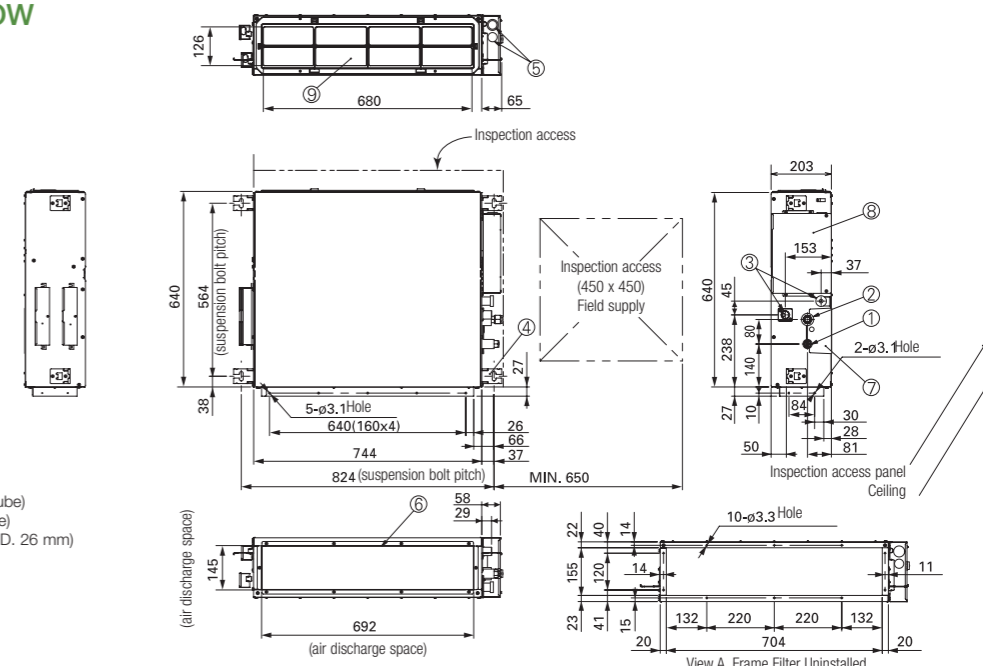


| Model Name                   |                          | S-22MM1E5A                        | S-28MM1E5A           | S-36MM1E5A           | S-45MM1E5A           | S-56MM1E5A           |              |
|------------------------------|--------------------------|-----------------------------------|----------------------|----------------------|----------------------|----------------------|--------------|
| Power source                 |                          | 220/230/240 V, 1 phase - 50/60 Hz |                      |                      |                      |                      |              |
| Cooling capacity             | kW                       | 2.2                               | 2.8                  | 3.6                  | 4.5                  | 5.6                  |              |
|                              | BTU/h                    | 7,500                             | 9,600                | 12,300               | 15,400               | 19,100               |              |
| Heating capacity             | kW                       | 2.5                               | 3.2                  | 4.2                  | 5.0                  | 6.3                  |              |
|                              | BTU/h                    | 8,500                             | 10,900               | 14,300               | 17,100               | 21,500               |              |
| Power input                  | Cooling kW               | 0.036/0.036/0.036                 | 0.040/0.040/0.040    | 0.042/0.042/0.042    | 0.049/0.049/0.049    | 0.064/0.064/0.064    |              |
|                              | Heating kW               | 0.026/0.026/0.026                 | 0.030/0.030/0.030    | 0.032/0.032/0.032    | 0.039/0.039/0.039    | 0.054/0.054/0.054    |              |
| Running current              | Cooling A                | 0.26/0.26/0.26                    | 0.30/0.30/0.30       | 0.31/0.31/0.31       | 0.37/0.37/0.37       | 0.48/0.48/0.48       |              |
|                              | Heating A                | 0.23/0.23/0.23                    | 0.27/0.27/0.27       | 0.28/0.28/0.28       | 0.34/0.34/0.34       | 0.45/0.45/0.45       |              |
| Fan                          | Type                     | Sirocco fan                       |                      |                      |                      |                      |              |
|                              | Air flow rate (H/M/L)    | m <sup>3</sup> /h                 | 480/420/360          | 510/450/390          | 540/480/420          | 630/570/480          | 750/690/600  |
|                              |                          | L/s                               | 133/117/100          | 142/125/108          | 150/133/117          | 175/158/133          | 208/192/167  |
|                              | Motor output             | kW                                | 0.06                 | 0.06                 | 0.06                 | 0.06                 | 0.06         |
|                              | External static pressure | Pa                                | 10 (30)              | 15 (30)              | 15 (40)              | 15 (40)              | 15 (40)      |
| Sound power level (H/M/L)    | dB                       | 43/42/40                          | 45/44/42             | 47/45/43             | 49/47/45             | 50/48/46             |              |
| Sound pressure level (H/M/L) | dB(A)                    | 28/27/25 (30/29/27)*              | 30/29/27 (32/31/29)* | 32/30/28 (34/32/30)* | 34/32/30 (36/34/32)* | 35/33/31 (37/35/32)* |              |
| Dimensions                   | H x W x D                | mm 200 x 750 x 640                |                      |                      |                      |                      |              |
|                              | Liquid                   | mm (inches)                       | Ø6.35 (Ø1/4)         | Ø6.35 (Ø1/4)         | Ø6.35 (Ø1/4)         | Ø6.35 (Ø1/4)         | Ø6.35 (Ø1/4) |
| Pipe connections             | Gas                      | mm (inches)                       | Ø12.7 (Ø1/2)         | Ø12.7 (Ø1/2)         | Ø12.7 (Ø1/2)         | Ø12.7 (Ø1/2)         | Ø12.7 (Ø1/2) |
|                              | Drain piping             |                                   | VP-20                | VP-20                | VP-20                | VP-20                | VP-20        |
| Net weight                   | kg                       | 19                                | 19                   | 19                   | 19                   | 19                   |              |

| GLOBAL REMARKS | Rated conditions:       | Cooling           | Heating         |
|----------------|-------------------------|-------------------|-----------------|
|                | Indoor air temperature  | 27°C DB / 19°C WB | 20°C DB         |
|                | Outdoor air temperature | 35°C DB / 24°C WB | 7°C DB / 6°C WB |

Specifications are subject to change without notice. \* With booster cable.

## M1 TYPE SLIM LOW STATIC DUCTED Dimensions



- 1 Refrigerant piping joint (narrow tube)
- 2 Refrigerant piping joint (wide tube)
- 3 Upper and bottom drain port (O.D. 26 mm)
- 4 Suspension lug
- 5 Power supply outlet (2- Ø30)
- 6 Flange for air intake duct
- 7 PI cover
- 8 Electrical component box
- 9 Frame filter

unit: mm