

# Ventilating Fan Specifications

Model:FV-15TGU1

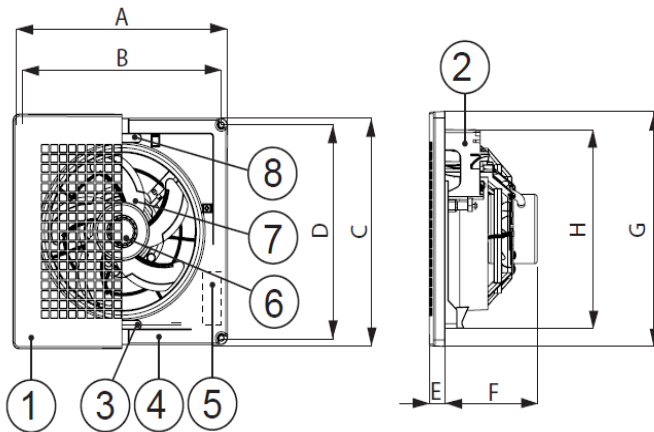
## ■ Specifications

			220V 50Hz
			Exhaust
Air Volume	m <sup>3</sup> /h	±10%	240
Power Consumption	W	±12%	10.0
Ampere	A	±12%	0.060
Noise	dB (A)	+3/-7	35.0
*Rotation Speed	min <sup>-1</sup>		1330

\*Rotation Speed data are reference only.

- |                                |   |
|--------------------------------|---|
| 1. Power Rating -----          | 220V~ 50Hz                              |
| 2. Motor Type -----            | Capacitor start and run induction motor |
| 3. Blade Type -----            | Propeller fan                           |
| 4. Ambient Temperature -----   | -10 to 40 deg.C                         |
| 5. Insulation Resistance ----- | More than 10 mega ohm                   |
| 6. Electrical Strength -----   | 1500V~ 1 minute                         |
| 7. Net Weight -----            | 1.2 Kg                                  |
| 8. Insulation Class -----      | Class E                                 |
| 9. Type of insulation -----    | Functional insulation                   |

## ■ Drawing with dimensions

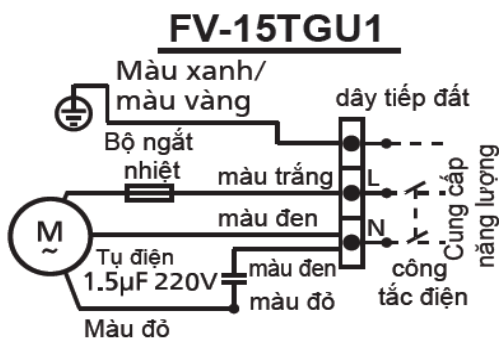


Tên phần :

1. Chấn song
2. Hộp thiết bị đầu dây dẫn
3. Lò xo
4. Thân máy
5. Bảng tên
6. Chốt cách quạt
7. Cánh quạt
8. Lò lò xo từ chấn song

NO	FV-15TGU1
A	244
B	230
C	244
D	230
E	18
F	108.1
G	252.5
H	214

## ■ Circuit diagram



# Ventilating Fan Specifications

Model : FV-25TGU5

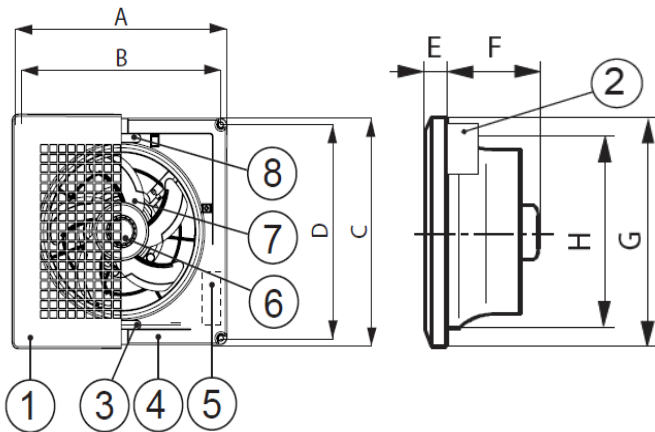
## ■ Specifications

			220V 50Hz
			Exhaust
Air Volume	m <sup>3</sup> /h	±10%	612
Power Consumption	W	±12%	26.5
Ampere	A	±12%	0.120
Noise	dB (A)	+3/-7	39.0
*Rotation Speed	min <sup>-1</sup>		970

\*Rotation Speed data are reference only.

- |                                |   |
|--------------------------------|---|
| 1. Power Rating -----          | 220V~ 50Hz                              |
| 2. Motor Type -----            | Capacitor start and run induction motor |
| 3. Blade Type -----            | Propeller fan                           |
| 4. Ambient Temperature -----   | -10 to 40 deg.C                         |
| 5. Insulation Resistance ----- | More than 10 mega ohm                   |
| 6. Electrical Strength -----   | 1500V~ 1 minute                         |
| 7. Net Weight -----            | 1.4 Kg                                  |
| 8. Insulation Class -----      | Class E                                 |
| 9. Type of insulation -----    | Functional insulation                   |

## ■ Drawing with dimensions



Tên phần :

1. Chấn song
2. Hộp thiết bị đầu dây dẫn
3. Lò xo
4. Thân máy
5. Bảng tên
6. Chốt cách quạt
7. Cánh quạt
8. Lò lò xo từ chấn song

NO	FV-25TGU5
A	355
B	336
C	355
D	336
E	31
F	107.5
G	362.5
H	310

## ■ Circuit diagram

