

4-WAY CASSETTE

NEW

nanoe™ X

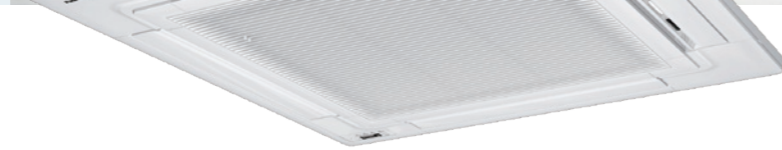
Model No.

S-19PU1H5B S-42PU1H5B
 S-25PU1H5B S-50PU1H5B
 S-30PU1H5B
 S-36PU1H5B

R32
REFRIGERANT

TECHNICAL FOCUS

- nanoe™ X equipped as standard
- Compact design
- Low sound levels
- DC fan motor for increased efficiency
- Powerful drain pump gives 850 mm lift
- Lightweight design



Accessories

Panel



CZ-KPU3H

Selectable Remote Controller



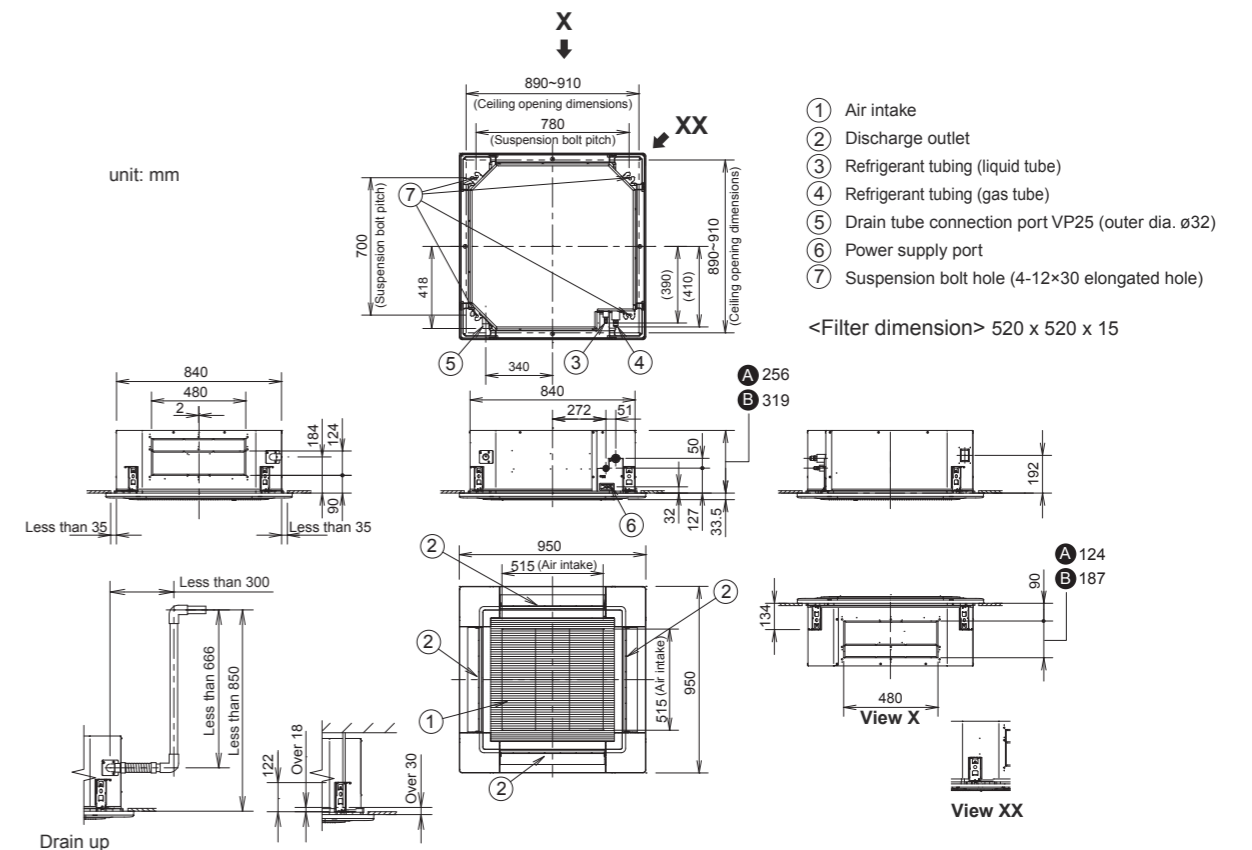
*A wireless remote controller is in the same package with the indoor unit.



CZ-RD513C (Optional)

Dimensions

- A** (S-19PU1H5B / S-25PU1H5B / S-30PU1H5B)
B (S-36PU1H5B / S-42PU1H5B / S-50PU1H5B)



* Adjust the suspension bolt length so that the gap from the lower ceiling surface becomes 30 mm or more (18 mm or more from the lower surface of the body) as shown in the figure. When the suspension bolt length is long, it hits the ceiling panel and installation is not possible.

Capacity [Btu/h]		18,500	25,000	30,000	30,000	36,000	42,000	48,500
Power Source	V/Phase Hz	220-240 V, 1Ø Phase - 50 Hz			380-415 V, 3Ø Phase - 50 Hz			
Indoor		S-19PU1H5B	S-25PU1H5B	S-30PU1H5B	S-30PU1H5B	S-36PU1H5B	S-42PU1H5B	S-50PU1H5B
Outdoor		U-19PN1H5	U-25PN1H5	U-30PN1H5	U-30PN1H8	U-36PN1H8	U-42PN1H8	U-50PN1H8
Panel		CZ-KPU3H	CZ-KPU3H	CZ-KPU3H	CZ-KPU3H	CZ-KPU3H	CZ-KPU3H	CZ-KPU3H
Cooling Capacity: Rated	kW	5.42	7.33	8.79	8.79	10.55	12.31	14.21
	Btu/h	18,500	25,000	30,000	30,000	36,000	42,000	48,500
Current	A	7.1-6.5	9.6-8.8	13.5-13.2	4.5-4.3	4.9-4.6	5.4-5.3	7.4-7.6
Power Input: Rated	kW	1.52	2.07	2.85	2.57	2.83	3.10	4.14
	W/W	3.57	3.54	3.08	3.42	3.73	3.97	3.43
COP/EER		12.17	12.08	10.53	11.67	12.72	13.55	11.71
	Btu/hW							
Indoor Unit								
Air Volume	m³/min	25.0	25.0	25.0	25.0	36.4	36.4	36.4
	cfm	882	882	882	882	1,285	1,285	1,285
Sound Pressure Level (Hi/Lo)	dB (A)	42/35	42/35	42/35	42/35	47/41	47/41	47/41
Sound Power Level (Hi/Lo)	dB	57/50	57/50	57/50	57/50	62/56	62/56	62/56
Dimension	Indoor (H×W×D)	mm	256 × 840 × 840	256 × 840 × 840	256 × 840 × 840	256 × 840 × 840	319 × 840 × 840	319 × 840 × 840
	Panel (H×W×D)	mm	33.5 × 950 × 950	33.5 × 950 × 950	33.5 × 950 × 950	33.5 × 950 × 950	33.5 × 950 × 950	33.5 × 950 × 950
Net Weight	Indoor	kg	21	21	21	21	24	24
	Panel	kg	5	5	5	5	5	5
Outdoor Unit								
Sound Pressure Level	dB (A)	50	52	54	54	55	58	58
Sound Power Level	dB	66	68	69	69	70	72	72
Dimension	Outdoor (H×W×D)	mm	619 × 824 × 299	619 × 824 × 299	695 × 875 × 320	695 × 875 × 320	996 × 980 × 370	996 × 980 × 370
Net Weight		kg	36	42	56	56	75	78
Piping Connection	Gas Pipe	mm (inch)	12.70 (1/2)	12.70 (1/2)	15.88 (5/8)	15.88 (5/8)	15.88 (5/8)	15.88 (5/8)
	Liquid Pipe	mm (inch)	6.35 (1/4)	6.35 (1/4)	9.52 (3/8)	9.52 (3/8)	9.52 (3/8)	9.52 (3/8)
Pipe Length	Min-Max	m	7.5 - 30	7.5 - 30	7.5 - 45	7.5 - 45	7.5 - 50	7.5 - 50
Elevation Difference		m	20	20	30	30	30	30
Maximum Chargeless Length	Max	m	7.5	7.5	7.5	7.5	7.5	7.5
Refrigerant Type/Additional Gas		g/m	R32/15	R32/15	R32/25	R32/25	R32/25	R32/25
Operating Range, Outdoor	Min-Max	°C	16-43	16-43	16-43	16-43	16-43	16-43