

F2_{TYPE} Mid Static Ducted

Model Name		S-22MF2E5A8	S-28MF2E5A8	S-36MF2E5A8	S-45MF2E5A8	S-56MF2E5A8
Power source		220/230/240V, 1 phase - 50/60Hz				
Cooling capacity	kW	2.2	2.8	3.6	4.5	5.6
	BTU/h	7,500	9,600	12,300	15,400	19,100
Heating capacity	kW	2.5	3.2	4.2	5.0	6.3
	BTU/h	8,500	10,900	14,300	17,100	21,500
Power input	Cooling kW	0.070/0.070/0.070	0.070/0.070/0.070	0.070/0.070/0.070	0.070/0.070/0.070	0.100/0.100/0.100
	Heating kW	0.070/0.070/0.070	0.070/0.070/0.070	0.070/0.070/0.070	0.070/0.070/0.070	0.100/0.100/0.100
Running amperes	Cooling A	0.60/0.57/0.56	0.60/0.57/0.56	0.60/0.57/0.56	0.60/0.57/0.56	0.77/0.74/0.71
	Heating A	0.60/0.57/0.56	0.60/0.57/0.56	0.60/0.57/0.56	0.60/0.57/0.56	0.77/0.74/0.71
Fan motor	Type	Sirocco fan				
	Air flow rate (H/M/L) m³/h	840/780/540	840/780/540	840/780/540	840/780/600	960/900/720
	L/s	233/217/150	233/217/150	233/217/150	233/217/167	267/250/200
	Output kW	0.119	0.119	0.119	0.119	0.119
External static pressure	Pa	70(10-150)				
Sound Power level (H/M/L)	dB	55/51/44	55/51/44	55/51/44	56/54/47	56/54/47
Sound pressure level (H/M/L)	dB(A)	33/29/22	33/29/22	33/29/22	34/32/25	34/32/25
Dimensions	H x W x D	290x800x700				
	Liquid mm (inches)	Ø6.35 (Ø1/4)				
Pipe connections	Gas mm (inches)	Ø12.7 (Ø1/2)				
	Drain piping	VP-25				
Net weight	kg	29	29	29	29	29

GLOBAL REMARKS	Rated conditions:	Cooling	Heating
	Indoor air temperature	27°C DB / 19°C WB	20°C DB
	Outdoor air temperature	35°C DB / 24°C WB	7°C DB / 6°C WB

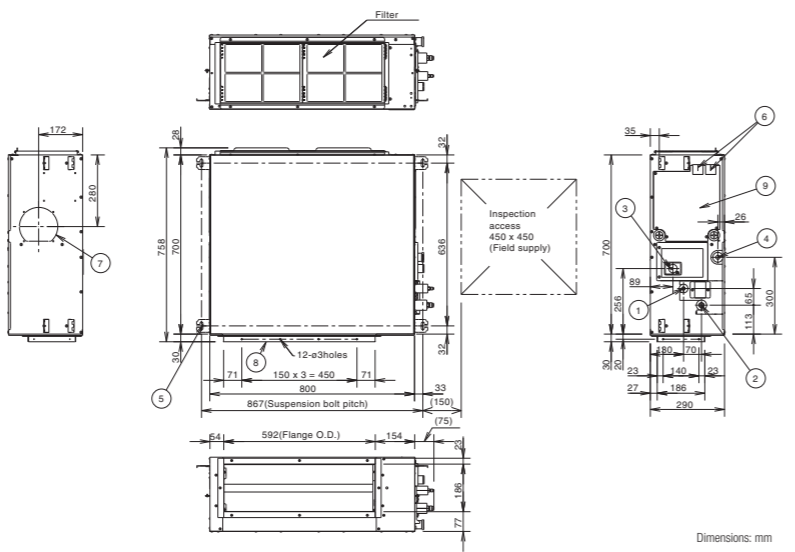
Specifications are subject to change without notice.

	S-60MF2E5A8	S-73MF2E5A8	S-90MF2E5A8	S-106MF2E5A8	S-140MF2E5A8	S-160MF2E5A8
Power source	220/230/240V, 1 phase - 50/60Hz					
Cooling capacity	6	7.3	9.0	10.6	14.0	16.0
Heating capacity	7.1	8.0	10.0	11.4	16.0	18.0
Power input	24,200	27,300	34,100	38,900	54,600	61,400
Running amperes	0.120/0.120/0.120	0.120/0.120/0.120	0.135/0.135/0.135	0.195/0.195/0.195	0.215/0.215/0.215	0.225/0.225/0.225
Fan motor	Sirocco fan	Sirocco fan	Sirocco fan	Sirocco fan	Sirocco fan	Sirocco fan
Net weight	46	46	46	46	46	46

F2 TYPE MID STATIC DUCTED Dimensions

SIZE 22-56

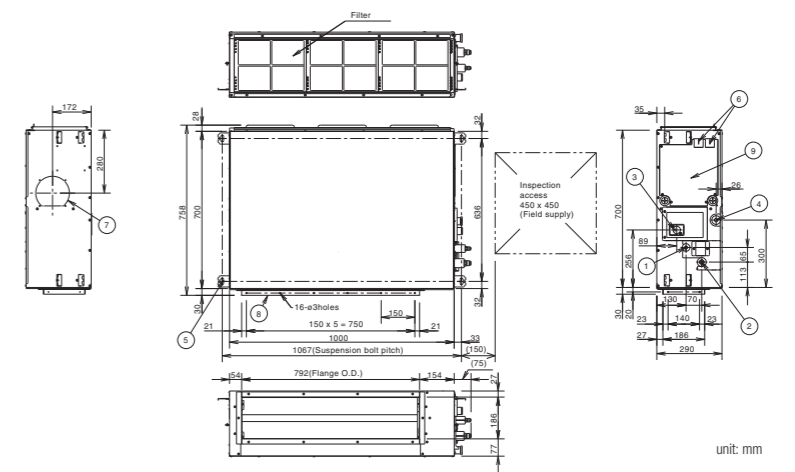
- 1 Refrigerant piping joint (liquid tube) Ø6.35 Flare
- 2 Refrigerant piping joint (gas tube) Ø12.7 Flare
- 3 Upper drain port VP25 (O.D. Ø32 mm)
- 4 Bottom drain port VP25 (O.D. Ø32 mm)
- 5 Suspension lug (4-12 x 30 mm)
- 6 Power supply outlet
- 7 Fresh air intake port (Ø150 mm)
- 8 Flange for flexible air outlet duct
- 9 Electrical component box



Dimensions: mm

SIZE 60-90

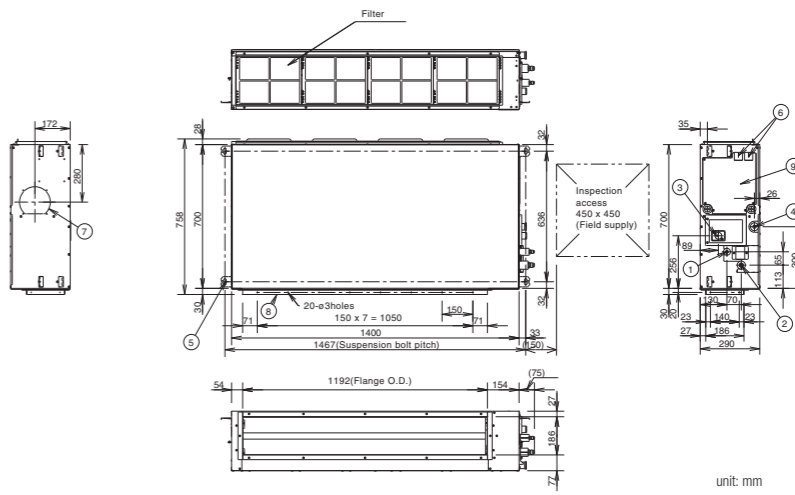
- 1 Refrigerant piping joint (liquid tube) Ø9.52 Flare
- 2 Refrigerant piping joint (gas tube) Ø15.88 Flare
- 3 Upper drain port VP25 (O.D. Ø32 mm)
- 4 Bottom drain port VP25 (O.D. Ø32 mm)
- 5 Suspension lug (4-12 x 30 mm)
- 6 Power supply outlet
- 7 Fresh air intake port (Ø150 mm)
- 8 Flange for flexible air outlet duct
- 9 Electrical component box



unit: mm

SIZE 106-160

- 1 Refrigerant piping joint (liquid tube) Ø9.52 Flare
- 2 Refrigerant piping joint (gas tube) Ø15.88 Flare
- 3 Upper drain port VP25 (O.D. Ø32 mm)
- 4 Bottom drain port VP25 (O.D. Ø32 mm)
- 5 Suspension lug (4-12 x 30 mm)
- 6 Power supply outlet
- 7 Fresh air intake port (Ø150 mm)
- 8 Flange for flexible air outlet duct
- 9 Electrical component box



unit: mm