

Corporate Data (As of March 31, 2019)

Panasonic Corporation and Subsidiaries
Years ended March 31

Corporate Data

Company Name: Panasonic Corporation (TSE Securities Code: 6752)	Stated Capital: 258,740 million yen
Founded: March 1918 (Incorporated in December 1935)	Consolidated Companies (including parent company): 582 companies
Head Office Location: 1006, Oaza Kadoma, Kadoma-shi, Osaka 571-8501, Japan	Associated Companies under the Equity Method: 87 companies
	Number of Employees: 271,869 persons

Share Data

Number of Shares Issued: 2,453,053,497 shares (Including 120,663,025 shares held by Panasonic)	Depository for American Depositary Receipts (ADRs) Stock Exchange: U.S. Over-the-Counter (OTC) Market ADR Ratio: 1 ADR = 1 Share Symbol: PCRFY
Number of Shareholders: 505,402	Stock Transfer Handling Office J.P. Morgan Chase Bank, N.A. P.O. Box 64504 St. Paul, MN 55164-0504, U.S.A. Tel: +1-800-990-1135 (U.S.: toll free) +1-651-453-2128 (International)
TSE Securities Code: 6752	
Unit of Stock: 100	
Stock Exchange Listings: Tokyo, Nagoya	
Transfer Agent for Common Stock: Sumitomo Mitsui Trust Bank, Limited 5-33, Kitahama, 4-chome, Chuo-ku, Osaka-shi, Osaka 540-8639, Japan Phone: +81-3-3323-7111	

	3/2010	3/2011	3/2012	3/2013	3/2014	3/2015	3/2016	3/2017	3/2018	3/2019
Number of Shares Issued (in thousands of shares)	2,453,053	2,453,053	2,453,053	2,453,053	2,453,053	2,453,053	2,453,053	2,453,053	2,453,053	2,453,053
Number of Shareholders	316,182	364,618	557,102	577,756	499,728	469,295	514,129	486,489	485,053	505,402
Distribution by Type of Shareholders (%)										
Japanese Financial Institutions, etc.	30.8	30.9	34.2	28.3	27.2	30.1	30.6	30.8	31.9	34.8
Overseas Investors, etc.	25.3	22.7	21.9	25.3	33.2	32.9	31.2	32.6	33.4	28.9
Other Corporations	7.1	7.1	8.4	8.3	7.4	7.1	6.9	7.0	6.8	6.8
Individuals and Others	21.2	23.7	29.7	32.3	26.4	24.1	25.9	24.7	23.0	24.6
Treasury Stock	15.6	15.6	5.8	5.8	5.8	5.8	5.4	4.9	4.9	4.9
Total	100.0	100.0	100.0	100.0	100.0	100.0	100.0	100.0	100.0	100.0

Major Shareholders

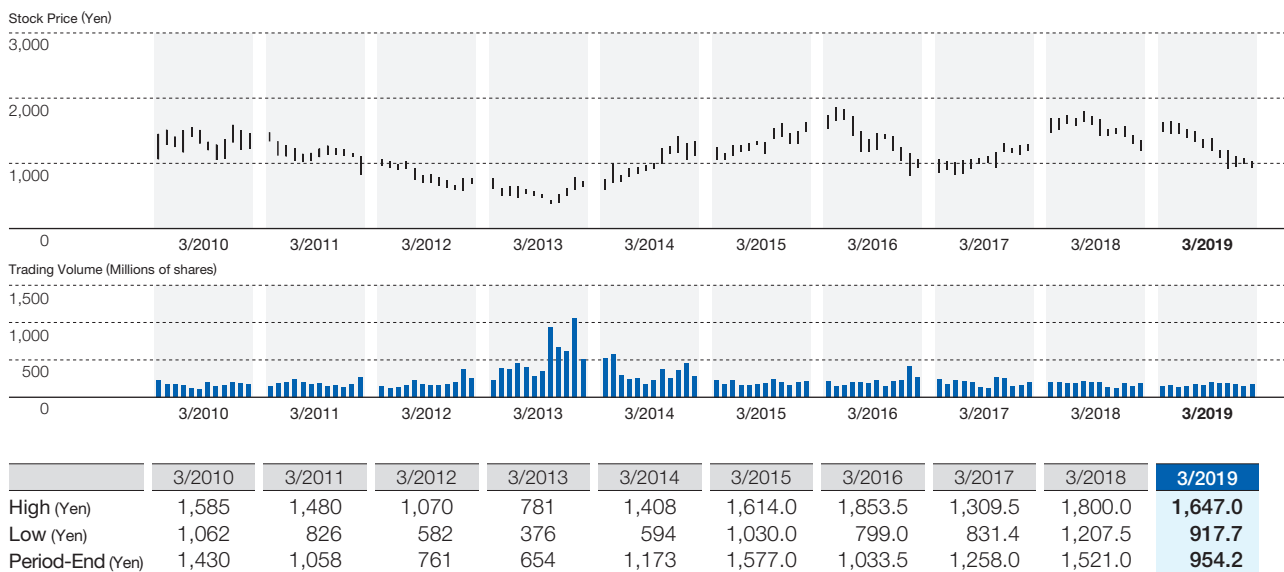
Name	Share ownership (in thousands of shares)	Percentage of total issued shares (%)
Japan Trustee Services Bank, Ltd. (trust account)	182,669	7.83
The Master Trust Bank of Japan, Ltd. (trust account)	161,292	6.91
NIPPON LIFE INSURANCE COMPANY	69,056	2.96
Japan Trustee Services Bank, Ltd. (trust account 5)	44,829	1.92
JP MORGAN CHASE BANK 385151	42,488	1.82
Panasonic Corporation Employee Shareholding Association	41,344	1.77
SUMITOMO LIFE INSURANCE COMPANY	37,465	1.60
STATE STREET BANK WEST CLIENT - TREATY 505234	34,671	1.48
Japan Trustee Services Bank, Ltd. (trust account 7)	34,218	1.46
JP MORGAN CHASE BANK 385632	33,435	1.43

Notes: 1. The figures in share ownership are rounded down to the nearest thousand shares.

2. Shareholding ratio is calculated by deducting the Company's treasury stock (120,663,025) and rounded down to two decimal places.

3. The English names of foreign shareholders above are based on the General Shareholders Notification notified by Japan Securities Depository Center, Inc.

Company Stock Price and Trading Volume (Years ended March 31) Tokyo Stock Exchange monthly basis



Corporate Bonds (As of July 31, 2019)

Unsecured Straight Bonds in Japan

Series	Years	Coupon rate (per annum)	Aggregate principal amount of issue	Maturity date
12th	5	0.387%	220 billion yen	March 19, 2020
13th	7	0.568%	80 billion yen	March 18, 2022
14th	10	0.934%	100 billion yen	March 19, 2025
15th	5	0.190%	200 billion yen	Sept. 17, 2021
16th	7	0.300%	70 billion yen	Sept. 20, 2023
17th	10	0.470%	130 billion yen	Sept. 18, 2026

USD-Denominated Senior Notes

	Years	Coupon rate (per annum)	Aggregate principal amount of issue	Maturity date
Due 2022	3	2.536%	US\$ 1 billion	July 19, 2022
Due 2024	5	2.679%	US\$ 1 billion	July 19, 2024
Due 2029	10	3.113%	US\$ 500 million	July 19, 2029

Investor Relations Offices

Osaka

Panasonic Corporation
Corporate Finance & Investor Relations Department,
Investor Relations
1006, Oaza Kadoma, Kadoma-shi, Osaka
571-8501, Japan
Phone: +81-6-6908-1121

Europe

Panasonic Business Support Europe GmbH
(UK branch), Investor Relations
Maxis 2, Western Road,
Bracknell, Berkshire, RG12 1RT, United Kingdom
Phone: +44-1344-853135

Tokyo

Panasonic Corporation
Corporate Finance & Investor Relations Department,
Investor Relations
TOKYO MIDTOWN HIBIYA 14F,
1-1-2 Yuraku-cyo, Chiyoda-ku, Tokyo
100-0006, Japan
Phone: +81-3-3437-1121

IR and Sustainability Websites

IR

Please refer to Panasonic's IR site for information on the Company including financial results and presentation materials.
<https://www.panasonic.com/global/corporate/ir.html>

Sustainability

Please refer to the "Sustainability" section of the Company's website for more information regarding environmental and social initiatives.
<https://www.panasonic.com/global/corporate/sustainability.html>