

## Corporate Data (As of March 31, 2020)

Panasonic Corporation and Subsidiaries  
Years ended March 31

### Corporate Data

**Company Name:** Panasonic Corporation  
(TSE Securities Code: 6752)

**Founded:** March 1918 (Incorporated in December 1935)

**Head Office Location:** 1006, Oaza Kadoma, Kadoma-shi,  
Osaka 571-8501, Japan

**Stated Capital:** 258,867 million yen

**Consolidated Companies (including parent company):**  
529 companies

**Companies under the Equity Method:**  
72 companies

**Number of Employees:** 259,385 persons

### Share Data

**Number of Shares Issued:** 2,453,326,997 shares  
(Including 120,365,301 shares held by Panasonic)

**Number of Shareholders:** 488,540

**TSE Securities Code:** 6752

**Unit of Stock:** 100

**Stock Exchange Listings:** Tokyo, Nagoya

**Transfer Agent for Common Stock:**  
Sumitomo Mitsui Trust Bank, Limited  
5-33, Kitahama, 4-chome, Chuo-ku, Osaka-shi,  
Osaka 540-8639, Japan  
Phone: +81-3-3323-7111

#### American Depositary Receipts (ADRs)

Depository Bank: J.P. Morgan Chase Bank, N.A.  
Stock Exchange: U.S. Over-the-Counter (OTC) Market  
ADR Ratio: 1 ADR = 1 Share  
Symbol: PCRFY

#### Stock Transfer Handling Office

Shareowner Services  
P.O. Box 64504  
St. Paul, MN 55164-0504, U.S.A.  
Phone: +1-800-990-1135 (U.S.: toll free)  
+1-651-453-2128 (International)

	3/2011	3/2012	3/2013	3/2014	3/2015	3/2016	3/2017	3/2018	3/2019	3/2020
Number of Shares Issued (in thousands of shares)	2,453,053	2,453,053	2,453,053	2,453,053	2,453,053	2,453,053	2,453,053	2,453,053	2,453,053	<b>2,453,326</b>
Number of Shareholders	364,618	557,102	577,756	499,728	469,295	514,129	486,489	485,053	505,402	<b>488,540</b>
Distribution by Type of Shareholders (%)										
Japanese Financial Institutions, etc.	30.9	34.2	28.3	27.2	30.1	30.6	30.8	31.9	34.8	<b>34.7</b>
Overseas Investors, etc.	22.7	21.9	25.3	33.2	32.9	31.2	32.6	33.4	28.9	<b>30.3</b>
Other Corporations	7.1	8.4	8.3	7.4	7.1	6.9	7.0	6.8	6.8	<b>6.1</b>
Individuals and Others	23.7	29.7	32.3	26.4	24.1	25.9	24.7	23.0	24.6	<b>24.0</b>
Treasury Stock	15.6	5.8	5.8	5.8	5.8	5.4	4.9	4.9	4.9	<b>4.9</b>
Total	100.0	100.0	100.0	100.0	100.0	100.0	100.0	100.0	100.0	<b>100.0</b>

### Major Shareholders

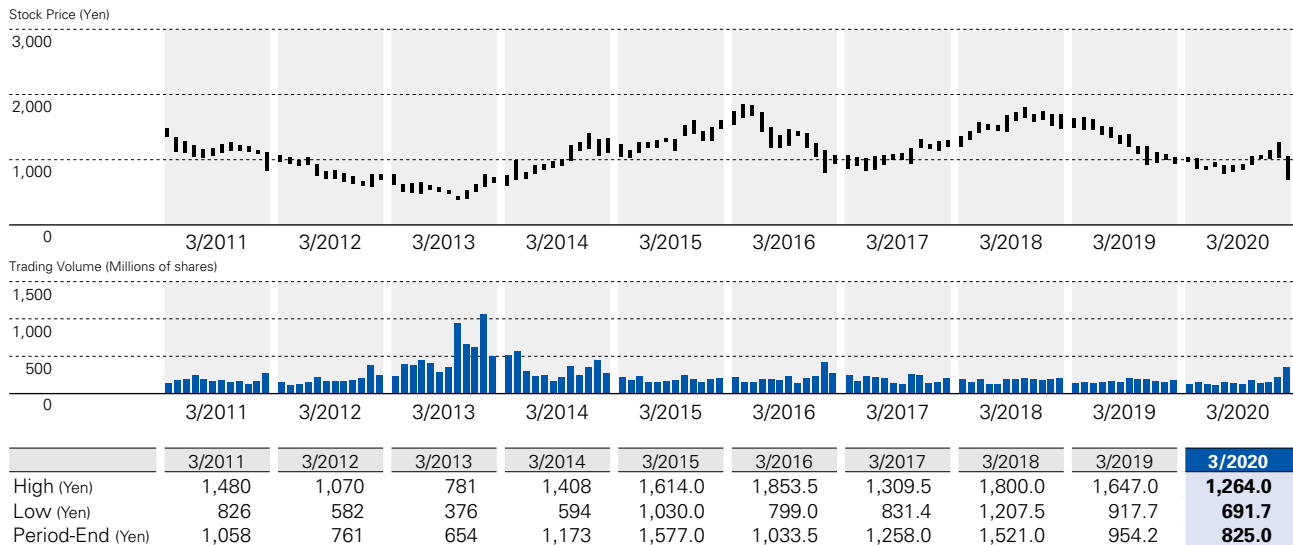
Name	Share ownership (in thousands of shares)	Percentage of total issued shares (%)
The Master Trust Bank of Japan, Ltd. (trust account)	188,150	8.06
Japan Trustee Services Bank, Ltd. (trust account)	177,805	7.62
NIPPON LIFE INSURANCE COMPANY	69,056	2.96
JP MORGAN CHASE BANK 385151	54,945	2.35
Japan Trustee Services Bank, Ltd. (trust account 5)	46,536	1.99
Panasonic Corporation Employee Shareholding Association	41,573	1.78
Japan Trustee Services Bank, Ltd. (trust account 7)	41,454	1.77
SUMITOMO LIFE INSURANCE COMPANY	37,465	1.60
STATE STREET BANK WEST CLIENT - TREATY 505234	33,340	1.42
Matsushita Real Estate Co., Ltd.	29,121	1.24

Notes: 1. The figures in share ownership are rounded down to the nearest thousand shares.

2. Shareholding ratio is calculated by deducting the Company's treasury stock (120,365,301) and rounded down to two decimal places.

3. The English names of foreign shareholders above are based on the General Shareholders Notification notified by Japan Securities Depository Center, Inc.

## Company Stock Price and Trading Volume (Years ended March 31) Tokyo Stock Exchange monthly basis



## Corporate Bonds

### Unsecured Straight Bonds in Japan

Series	Years	Coupon rate (per annum)	Aggregate principal amount of issue	Maturity date
13th	7	0.568%	80 billion yen	March 18, 2022
14th	10	0.934%	100 billion yen	March 19, 2025
15th	5	0.190%	200 billion yen	Sept. 17, 2021
16th	7	0.300%	70 billion yen	Sept. 20, 2023
17th	10	0.470%	130 billion yen	Sept. 18, 2026
18th	6	0.230%	30 billion yen	March 5, 2026
19th	10	0.370%	70 billion yen	March 5, 2030

### USD-Denominated Senior Notes

	Years	Coupon rate (per annum)	Aggregate principal amount of issue	Maturity date
Due 2022	3	2.536%	US\$ 1 billion	July 19, 2022
Due 2024	5	2.679%	US\$ 1 billion	July 19, 2024
Due 2029	10	3.113%	US\$ 500 million	July 19, 2029

## Investor Relations Offices

### Osaka

Investor Relations  
Corporate Finance & Investor Relations Department  
Panasonic Corporation  
1006, Oaza Kadoma, Kadoma-shi, Osaka 571-8501, Japan  
Phone: +81-6-6908-1121

### Europe

Investor Relations  
Panasonic Business Support Europe GmbH  
(UK branch)  
Maxis 2, Western Road,  
Bracknell, Berkshire, RG12 1RT, United Kingdom  
Phone: +44-1344-853135

### Tokyo

Investor Relations  
Corporate Finance & Investor Relations Department  
Panasonic Corporation  
TOKYO MIDTOWN HIBIYA 14F,  
1-1-2 Yuraku-cho, Chiyoda-ku, Tokyo 100-0006, Japan  
Phone: +81-3-3437-1121

## IR and Sustainability Websites

**IR** Please refer to Panasonic's IR site for information on the Company including financial results and presentation materials.  
<https://www.panasonic.com/global/corporate/ir.html>

**Sustainability** Please refer to the "Sustainability" section of the Company's website for more information regarding environmental and social initiatives.  
<https://www.panasonic.com/global/corporate/sustainability.html>