

## Corporate Data (As of March 31, 2018)

Panasonic Corporation and Subsidiaries  
Years ended March 31

### Corporate Data

**Company Name:** Panasonic Corporation  
(TSE Securities Code: 6752)

**Founded:** March 1918 (Incorporated in December 1935)

**Head Office Location:**  
1006, Oaza Kadoma, Kadoma-shi, Osaka  
571-8501, Japan

**Stated Capital:** 258,740 million yen

**Consolidated Companies (including parent company):**  
592 companies

**Associated Companies under the Equity Method:**  
88 companies

**Number of Employees:** 274,143 persons

### Share Data

**Number of Shares Issued:** 2,453,053,497 shares  
(Including 120,718,303 shares held by Panasonic)

**Number of Shareholders:** 485,053

**TSE Securities Code:** 6752

**Unit of Stock:** 100

**Stock Exchange Listings:** Tokyo, Nagoya

**Transfer Agent for Common Stock**

Sumitomo Mitsui Trust Bank, Limited  
5-33, Kitahama, 4-chome, Chuo-ku, Osaka-shi,  
Osaka 540-8639, Japan  
Phone: +81-3-3323-7111

**Depository for American Depositary Receipts (ADRs)**

Stock Exchange: U.S. Over-the-Counter (OTC) Market  
ADR Ratio: 1 ADR = 1 Share  
Symbol: PCRFY

**Stock Transfer Handling Office**

J.P. Morgan Chase Bank, N.A.  
P.O. Box 64504  
St. Paul, MN 55164-0504, U.S.A.  
Tel: +1-800-990-1135 (U.S.: toll free)  
+1-651-453-2128 (International)

	3/2009	3/2010	3/2011	3/2012	3/2013	3/2014	3/2015	3/2016	3/2017	3/2018
Number of Shares Issued (in thousands of shares)	2,453,053	2,453,053	2,453,053	2,453,053	2,453,053	2,453,053	2,453,053	2,453,053	2,453,053	2,453,053
Number of Shareholders	277,710	316,182	364,618	557,102	577,756	499,728	469,295	514,129	486,489	485,053
Distribution by Type of Shareholders (%)										
Japanese Financial Institutions, etc.	34.1	30.8	30.9	34.2	28.3	27.2	30.1	30.6	30.8	31.9
Overseas Investors, etc.	22.5	25.3	22.7	21.9	25.3	33.2	32.9	31.2	32.6	33.4
Other Corporations	7.1	7.1	7.1	8.4	8.3	7.4	7.1	6.9	7.0	6.8
Individuals and Others	20.7	21.2	23.7	29.7	32.3	26.4	24.1	25.9	24.7	23.0
Treasury Stock	15.6	15.6	15.6	5.8	5.8	5.8	5.8	5.4	4.9	4.9
Total	100.0	100.0	100.0	100.0	100.0	100.0	100.0	100.0	100.0	100.0

### Major Shareholders

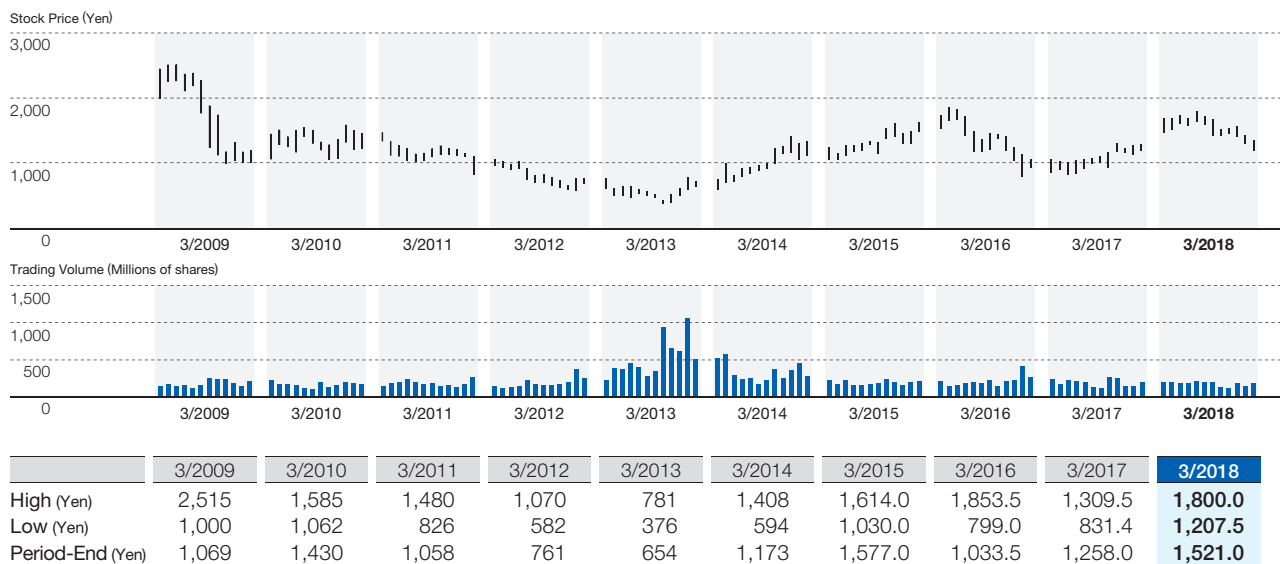
Name	Share ownership (in thousands of shares)	Percentage of total issued shares (%)
Japan Trustee Services Bank, Ltd. (trust account)	167,229	7.17
The Master Trust Bank of Japan, Ltd. (trust account)	141,151	6.05
NIPPON LIFE INSURANCE COMPANY	69,056	2.96
MOXLEY AND CO LLC	44,864	1.92
Japan Trustee Services Bank, Ltd. (trust account 5)	43,657	1.87
Panasonic Corporation Employee Shareholding Association	41,159	1.76
STATE STREET BANK WEST CLIENT - TREATY 505234	40,827	1.75
SUMITOMO LIFE INSURANCE COMPANY	37,465	1.60
Japan Trustee Services Bank, Ltd. (trust account 7)	32,952	1.41
Japan Trustee Services Bank, Ltd. (trust account 1)	32,451	1.39

Notes: 1. The figures in share ownership are rounded down to the nearest thousands of shares.

2. Shareholding ratio is calculated by deducting the Company's treasury stock (120,718,303) and rounded down to two decimal places.

3. The English names of foreign shareholders above are based on the General Shareholders Notification notified by Japan Securities Depository Center, Inc.

## Company Stock Price and Trading Volume (Years ended March 31) Tokyo Stock Exchange monthly basis



## Corporate Bonds

### Unsecured Straight Bonds in Japan

Series	Years	Coupon rate (per annum)	Aggregate principal amount of issue	Maturity date
8th	10	2.050%	100 billion yen	March 20, 2019
12th	5	0.387%	220 billion yen	March 19, 2020
13th	7	0.568%	80 billion yen	March 18, 2022
14th	10	0.934%	100 billion yen	March 19, 2025
15th	5	0.190%	200 billion yen	Sept. 17, 2021
16th	7	0.300%	70 billion yen	Sept. 20, 2023
17th	10	0.470%	130 billion yen	Sept. 18, 2026
4th*	10	1.593%	30 billion yen	June 20, 2019

\* Originally issued by former Panasonic Electric Works. Panasonic succeeded corporate bonds of former Panasonic Electric Works on January 1, 2012.

## Investor Relations Offices

### Japan

#### Osaka

Panasonic Corporation  
Corporate Finance & Investor Relations Department,  
Investor Relations  
1006, Oaza Kadoma, Kadoma-shi, Osaka  
571-8501, Japan  
Phone: +81-6-6908-1121

#### Tokyo

Panasonic Corporation  
Corporate Finance & Investor Relations Department,  
Investor Relations  
TOKYO MIDTOWN HIBIYA 14F,  
1-1-2 Yuraku-cyo, Chiyoda-ku, Tokyo  
100-0006, Japan  
Phone: +81-3-3437-1121

### Europe

#### Panasonic Europe Ltd.

Panasonic House, Willoughby Road,  
Bracknell, Berkshire, RG12 8FP, U.K.  
Phone: +44-1344-853135

## IR and Sustainability Websites

**IR** Please refer to Panasonic's IR site for information on the Company including financial results and presentation materials.  
<https://www.panasonic.com/global/corporate/ir.html>

**Sustainability** Please refer to the "Sustainability" section of the Company's website for more information regarding environmental and social initiatives.  
<https://www.panasonic.com/global/corporate/sustainability.html>